



Compact roundflow cassette unit

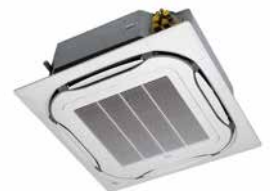
Bluevolution

FCAG-B / RXM-R

R-32 BLUEEVOLUTION

360° air discharge for optimum efficiency and comfort

- › Combination with split outdoor units is ideal for small retail, offices or residential applications
- › Lowest installation height in the market: 204mm for class 71
- › Individual louvre control: flexibility to suit every room layout without changing the location of the unit
- › Modern style decoration panel is available in 3 different variations: white (RAL9010) with grey louvers, full white (RAL9010) or Auto-cleaning panel
- › Automatic filter cleaning results in higher efficiency & comfort and lower maintenance costs. 2 filters available: standard filter and finer mesh filter (for fine dust applications i.e. clothing shops)
- › Two optional intelligent sensors improve energy efficiency and comfort
- › No optional adapter needed for DIII-connection, link your unit directly into the wider building management system
- › Branch duct discharge allows to optimize air distribution in irregular shaped rooms or to supply air to small adjacent rooms
- › Reduced energy consumption thanks to specially developed small tube exchanger, DC fan motor and drain pump
- › Optional fresh air intake
- › Standard drain pump with 675mm lift increases flexibility and installation speed



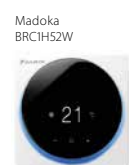
FCAG-B



RXM50-60R



BRC7FA532F/B (optional)



Madoka BRC1H52W



WI-FI CONTROL VIA APP



WI-FI ADAPTOR AVAILABLE AS AN OPTION

FCAG-B / RXM-R

R-32 BLUEEVOLUTION

Indoor Units			FCAG35B	FCAG50B	FCAG60B
Capacity	UK Total Cooling	kW	3.32	4.89	5.57
	UK Sensible Cooling	kW	2.28	3.25	3.68
	Nominal Cooling	kW	3.4	5.0	5.7
	Nominal Heating	kW	4.2	6.0	7.0
Seasonal Efficiency (EN14825) COOLING	Energy Label		A++	A++	A++
	Pdesign	kW	3.5	5.0	5.7
	SEER		6.35	6.54	6.40
	Annual Energy Consumption	kWh	193	266	312
Seasonal Efficiency (EN14825) HEATING	Energy Label		A++	A+	A+
	Pdesign	kW	3.32	4.36	4.71
	SCOP		4.9	4.3	4.2
	Annual Energy Consumption	kWh	948	1419	1569
Air Flow Rate (Cooling)	High / Med / Low	m ³ /sec	0.215 / 0.177 / 0.147	0.243 / 0.197 / 0.157	0.248 / 0.203 / 0.160
Dimensions (with Decoration Panel)	Height	mm	204 (269)	204 (269)	204 (269)
	Width	mm	840 (950)	840 (950)	840 (950)
	Depth	mm	840 (950)	840 (950)	840 (950)
Weight (with Decoration Panel)		kg	18 (23.5)	19 (24.5)	19 (24.5)
Sound Pressure (Cooling)	High / Med / Low	dBA	31 / 29 / 27	31 / 29 / 27	33 / 31 / 28
Sound Pressure (Heating)	High / Med / Low	dBA	31 / 29 / 27	31 / 29 / 27	33 / 31 / 28
Sound Power (Cooling)		dBA	49	49	51

Outdoor Units			RXM35R9	RXM50R	RXM60R
Dimensions	Height x Width x Depth	mm	550 x 765 x 285	734 x 870 x 373	734 x 870 x 373
Weight		kg	32	49	49
Electrical Details	Power Supply		1ph	1ph	1ph
	Maximum Input Current (MCA) A		10.92	14.21	14.76
	Max Fuse Size	A	13	16	16
Interconnection Wiring	Core / Cable Size		3+E / 1.5	3+E / 1.5	3+E / 1.5
Piping Connections	Liquid / Gas	inches (mm)	1/4 (6.4) / 3/8 (9.5)	1/4 (6.4) / 1/2 (12.7)	1/4 (6.4) / 1/2 (12.7)
Pipework	Maximum Length	m	20	30	30
	Maximum Vertical Rise	m	15	20	20
	Precharged to	m	10	10	10
	Additional charge	g/m	20	20	20
	Holding charge	kg	0.76	1.15	1.15
Sound Pressure (Cooling)	Nominal	dBA	49	48	48
Sound Pressure (Heating)	Nominal	dBA	49	49	49
Sound Power (Cooling)		dBA	61	62	63
Operating Range (Cooling)	Min / Max	°CDB	-10 / 50	-10 / 50	-10 / 50
Operating Range (Heating)	Min / Max	°CWB	-15 / 18	-15 / 18	-15 / 18
Air Flow Rate (Cooling)	Nominal	m ³ /sec	0.600	0.777	0.777
Meets ETL criteria				•	•

Accessories:

Accessory Ref	Description
BYCQ140E	Decoration panel - White (Included as standard)
BYCQ140EB	Decoration panel - Black
BRP069C82	Wifi adaptor for connection to on-line controller
BRC1H52W	Wired touch screen remote controller - White (Included as standard)
BRC1H52S	Wired touch screen remote controller - Silver
BRC1H52K	Wired touch screen remote controller - Black
BRC7FA532F	Wireless remote controller - White
BRC7FA532FB	Wireless remote controller - Black
BRYQ140B	Integral PIR sensor for roundflow decoration panel (for white panel)
BRYQ140BB	Integral PIR sensor for roundflow decoration panel (for black panel)
BYCQ140EGF	Auto Cleaning Deco Panel - White
BYCQ140EGFB	Auto Cleaning Deco Panel - Black
BYCQ140EW	Decoration Panel - Full White
EWHR1	Extension wire - Required if Wifi Adaptor and Auto Cleaning panel are installed together
K.CGM	Condensing unit guard (1150 x 1150 x 650)

Accessory Ref	Description
K.CWB90-2	Condensing unit bracket - up to size 71, max weight 90kg of ODU
K.DT1	Condensate drip tray for use with K.CWB90-2
SB.K.RSS_RFC	Wireless room mounted temperature sensor and receiver
KDBHQ56B140	Sealing member for air discharge outlet
KDDP55C160-1	Fresh air intake kit for up to 20% fresh air (Part 1)
KDDP55D160-2	Fresh air intake kit for up to 20% fresh air (Part 2)
KLIC-DI	KNX Interface for Sky Air and VRV systems
KRCS01-7B	Remote room mounted temperature sensor
KRP4A53 and UK.FB2	Unit/group adaptor PCB for remote on/off, status indication and temperature setting
RS-SE	Service and configuration tool for K.RSS
RTD-10 and UK.FB2	Enhanced function PCB for Sky Air and VRV. Duty rotation, Lead Lag control and heating interlock
RTD-20 and UK.FB2	Energy control PCB for Sky Air and VRV
RTD-NET and UK.FB2	Modbus interface PCB for Sky Air and VRV

The present leaflet is drawn up by way of information only and does not constitute an offer binding upon Daikin UK. Daikin UK has compiled the content of this leaflet to the best of its knowledge. No express or implied warranty is given for the completeness, accuracy, reliability or fitness for particular purpose of its content and the products and services presented therein. Specifications are subject to change without prior notice. Daikin UK explicitly rejects any liability for any direct or indirect damage, in the broadest sense, arising from or related to the use and/or interpretation of this leaflet. All content is copyrighted by Daikin UK.



Daikin Europe N.V. participates in the Eurovent Certification programme for Air conditioners (AC), Liquid Chilling Packages (LCP), Air handling units (AHU) and Fan coil units (FCU). Check ongoing validity of certificate online: www.eurovent-certification.com or using: www.certiflash.com